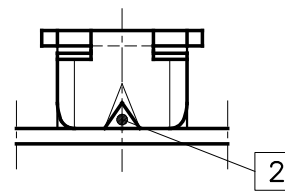
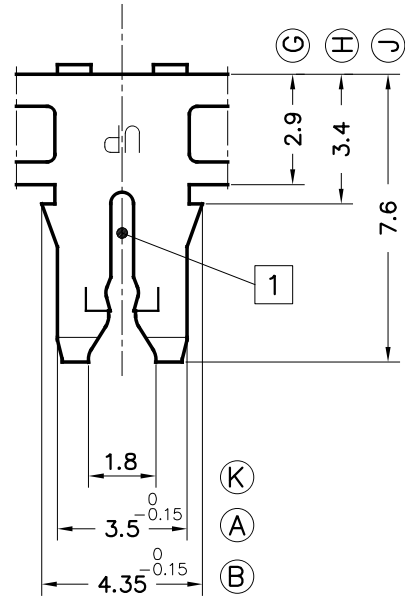
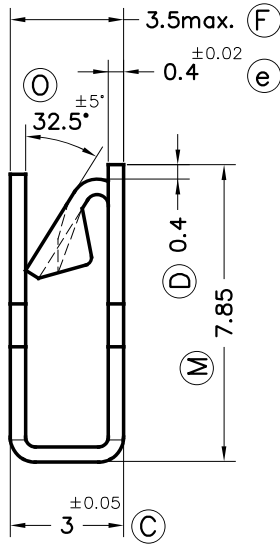
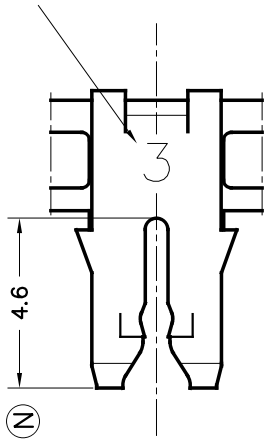


Number "3" identifies the magnet wire range



**Notes:**

**1** Copper wires: Slot allows insertion of single magnet wire.  
Aluminium wires: Slot may accept single aluminium magnet wires. Consult Escubedo for the wire range.

**2** Allows connection of UP-MATE tabs, as well as rigid or multi-stranded wires

6903.02	Tinplated	CuZn30*	0.32-0.45 mm	- mm	<sup>2</sup>					00	1st. Edition	20/07/18
References	Finish	Material	∅Copper Magnet wire	Cable Sq.section	<b>1</b>	A	B	C	D	Rev.	Description	Date

<p>ESPECIALITATS ELÈCTRIQUES ESCUBEDO S.A.</p>			<p><b>FEMALE UP-MATE</b></p>					
DWN	VR	20/07/18					<p>SIZE</p> <p>A4v</p>	
CHK	XM	20/07/18	<p>MATERIAL STANDARDS</p> <p>EN 1654*</p>		<p>DIMENSIONAL STANDARDS</p> <p>Specials</p>		<p>GENERAL TOLERANCES</p> <p>±0.2 ±2°</p>	
<p>SCALE 5/1</p>							<p>DRW NAME</p> <p>PT6903 "c"</p>	
							<p>REF. 6903.xx</p>	