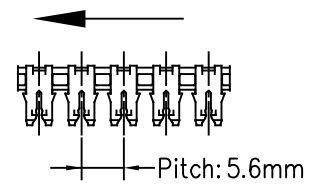


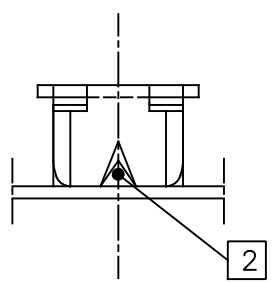
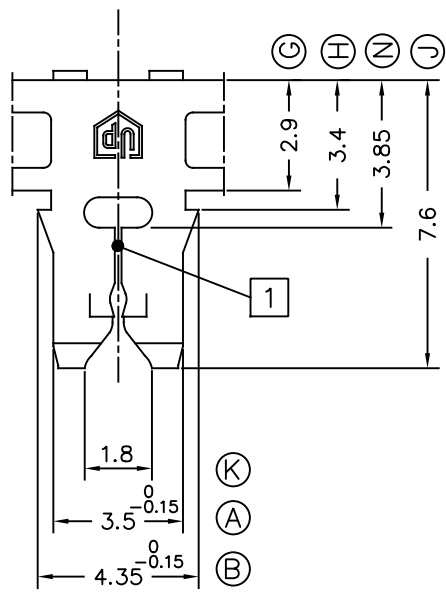
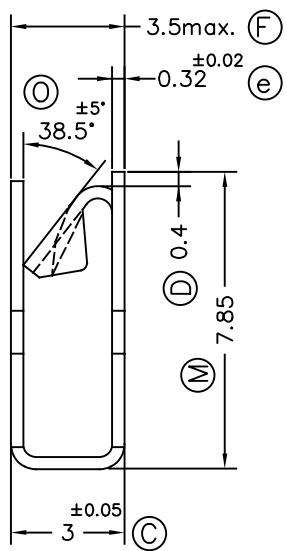
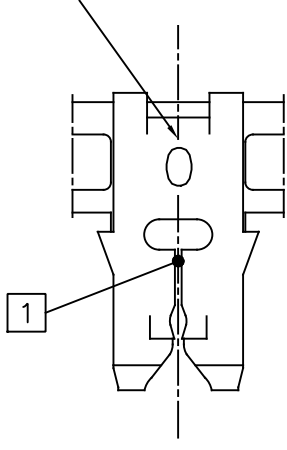
E: 5/1

Delivery Form



E: 1/1

Number "0" identifies the magnet wire range



Notes:

[1] Copper wires: Slot allows insertion of single magnet wire.  
Aluminium wires: Slot may accept single aluminium magnet wires. Consult Escubedo for the wire range.

[2] Allows connection of UP-MATE tabs, as well as rigid or multi-stranded wires

04	Inf. updated	15/10/18
03	Inf. updated	02/08/18
02	Updated & Al. wire	13/03/17
01	Dimens. Rev.	01/07/09

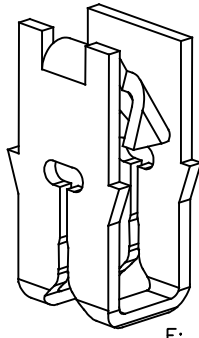
6900.02	Tinplated	CuZn30*	0.25-0.35 mm	0.5-0.9 mm <sup>2</sup>					00	1st. Edition	16/07/08
References	Finish	Material	∅Copper Magnet wire [1]	Cable Sq.section [2]	A	B	C	D	Rev.	Description	Date



FEMALE UP-MATE

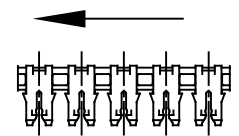


DWN	JCS	16/07/08				SIZE	A4v
CHK	FAT	16/07/08	MATERIAL STANDARDS	DIMENSIONAL STANDARDS	GENERAL TOLERANCES	DRW NAME	PT6900 "c"
SCALE	5/1		EN 1654*	Specials	±0.2 ±2°	REF.	6900.xx



E: 5/1

Delivery Form

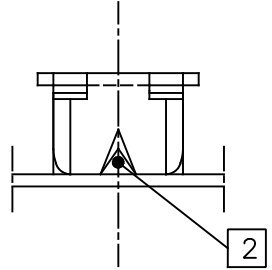
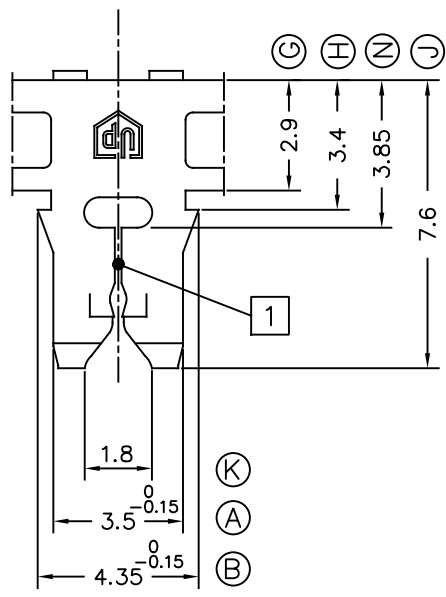
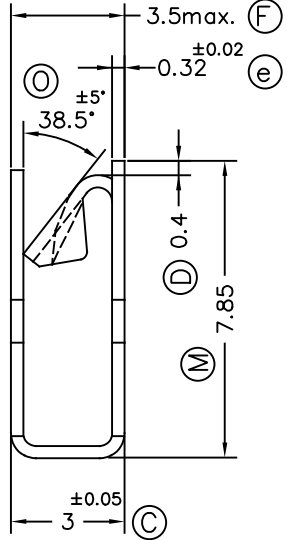
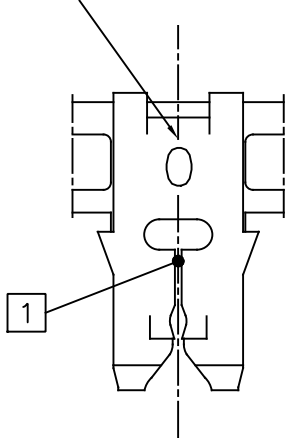


Pitch: 5.6mm

E: 1/1

Reeled with interlayer paper

Number "0" identifies the magnet wire range



Notes:

[1] Copper wires: Slot allows insertion of single magnet wire.  
Aluminium wires: Slot may accept single aluminium magnet wires. Consult Escubedo for the wire range.

[2] Allows connection of UP-MATE tabs, as well as rigid or multi-stranded wires

04	Inf. updated	15/10/18
03	Inf. updated	02/08/18
02	Updated & Al. wire	13/03/17
01	Dimens. Rev.	01/07/09

6900E02	Tinplated	CuZn30*	0.25-0.35 mm	0.5-0.9 mm <sup>2</sup>					00	1st. Edition	16/07/08
References	Finish	Material	∅Copper Magnet wire [1]	Cable Sq.section [2]	A	B	C	D	Rev.	Description	Date



FEMALE UP-MAG



DWN	JCS	16/07/08				SIZE	A4v
CHK	FAT	16/07/08	MATERIAL STANDARDS	DIMENSIONAL STANDARDS	GENERAL TOLERANCES	DRW NAME	PT6900E "c"
SCALE	5/1		EN 1654*	Specials	±0.2 ±2°	REF.	6900Exx