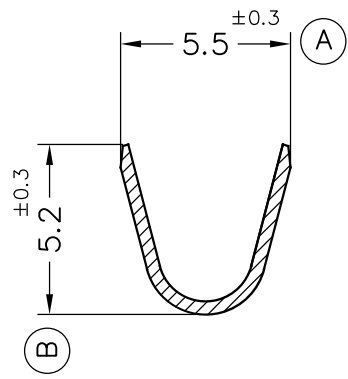
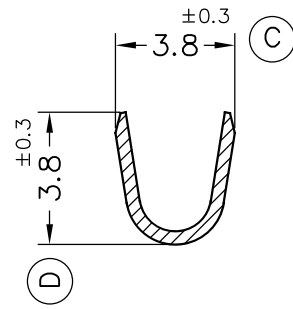


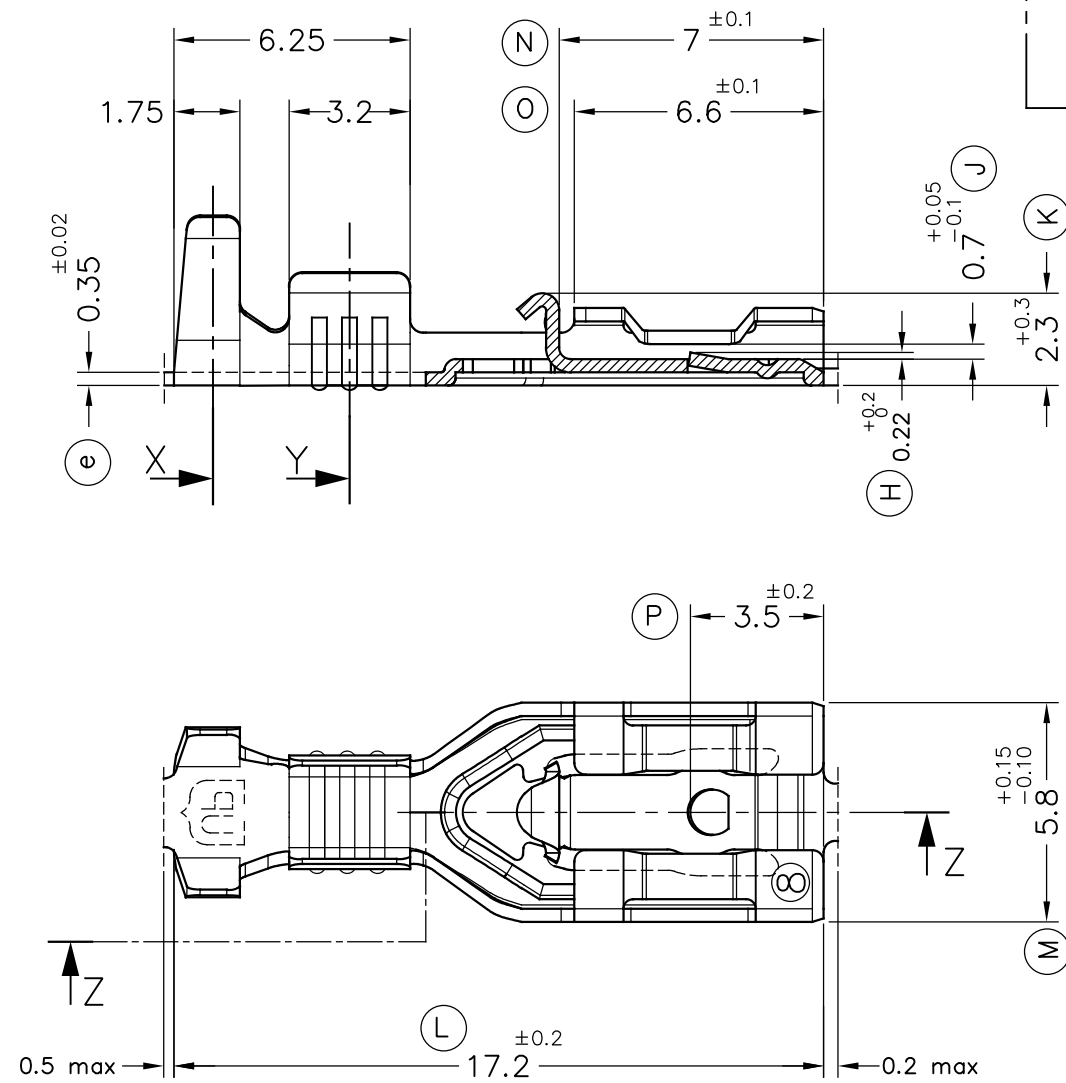
Secc.X



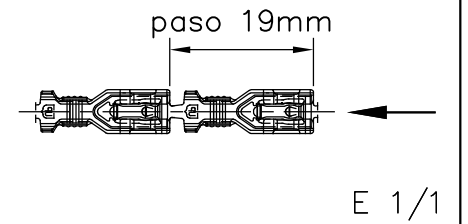
Secc.Y



Secc.Z-Z

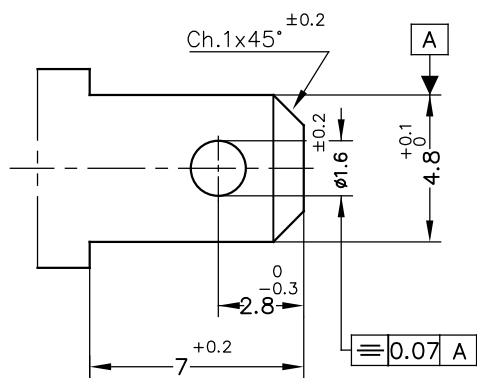
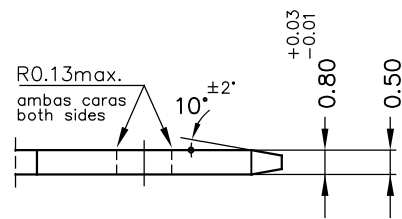


FORMA DE SUMINISTRO



MACHO DE CONEXIÓN SUGERIDO/SUGGESTED MALE

- Material CuZn o Fe-Pre Ni
- Sin rebabas en el agujero/No burrs at hole
- Planitud dentro de 0.03mm en toda su longitud/Flatness within 0.03mm over the whole length
- Agujero simétrico sobre el eje del macho/ Hole be symmetrical about tab acc. drawing specification



E 5:1

4776.51	Pre-Sn	CuNiSi*	1 ÷ 2.5mm <sup>2</sup>	3 ÷ 4.3mm.	4.8x0.8				
4776.24	Pre-Niq.	Acero							
4776.01	Pre-Sn	Latón*							
4776.00	Natural	CuZn30							
Referencias	Acabados	Material	Sección Conductor	Ø Aislante	Para Macho	Rev.	Modificación	Fecha	

<p>ESPECIALTATS ELÈCTRIQUES ESCUBEDO S.A.</p>			<p>TERMINAL HEMBRA Serie 4.8 UP-TPSEK3</p>				
DIBUJADO	EP	25/01/16	NORMAS MATERIALES EN 1654 *		NORMAS DIMENSIONALES Especiales	TOLERANCIAS GENERALES ±0.2 ±2°	FORMATO A3h
CONTROL	XM	15/03/16	REF. 4776.xx		NOMBRE PT4776 "c"		