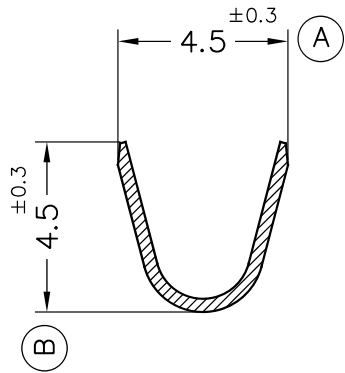
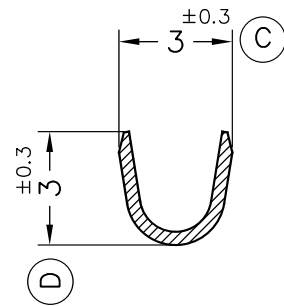


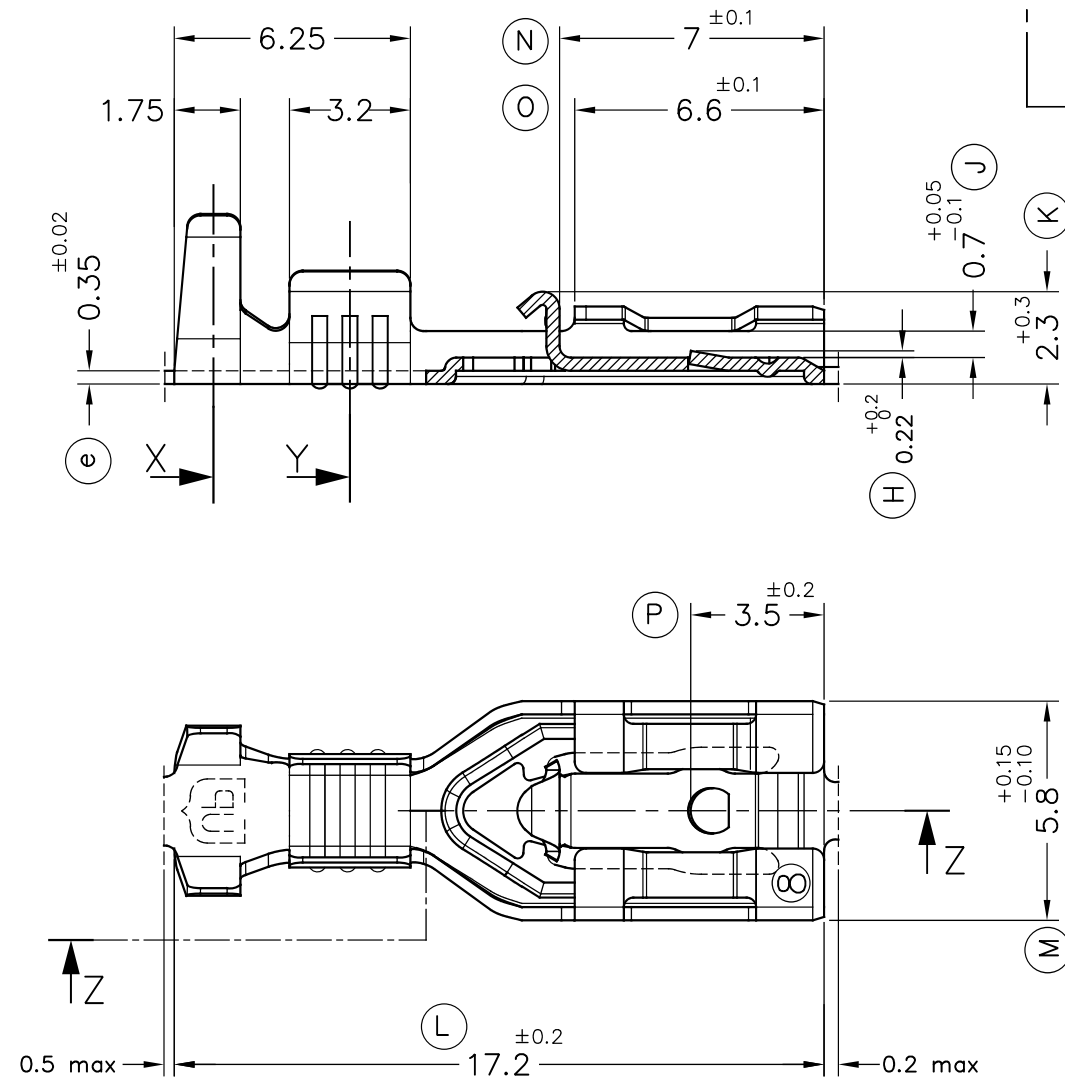
Secc.X



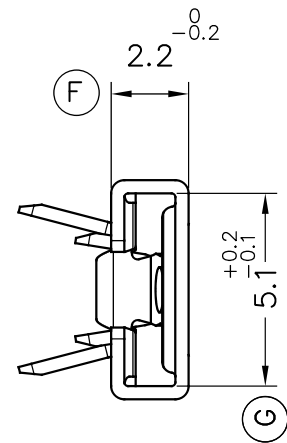
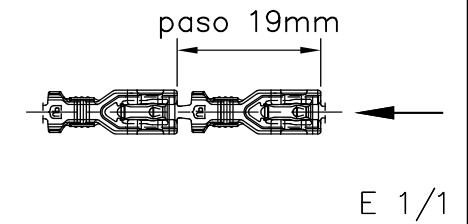
Secc.Y



Secc.Z-Z

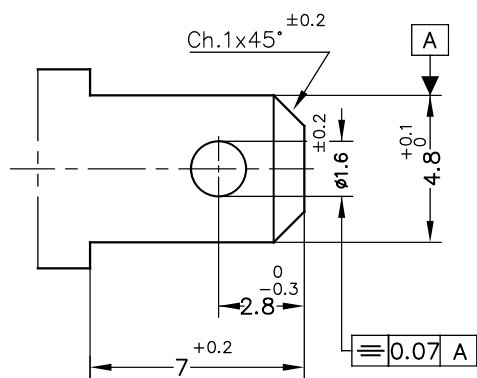
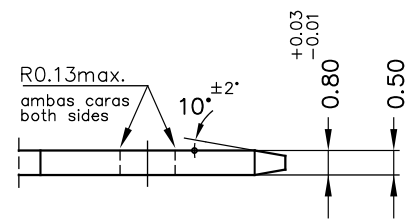


FORMA DE SUMINISTRO



MACHO DE CONEXIÓN SUGERIDO/SUGGESTED MALE

- Material CuZn o Fe-Pre Ni
- Sin rebabas en el agujero/No burrs at hole
- Planitud dentro de 0.03mm en toda su longitud/ Flatness within 0.03mm over the whole length
- Agujero simétrico sobre el eje del macho/ Hole be symmetrical about tab acc. drawing specification



E 5:1

4774.51	Pre-Sn	CuNiSi*	0.5 ÷ 1mm <sup>2</sup>	1.8 ÷ 2.5mm.	4.8x0.8					
4774.24	Pre-Niq.	Acero								
4774.01	Pre-Sn	Latón*						01 <sub>vr</sub>	Tol.cota ④/⑤	01/06/16
4774.00	Natural	CuZn30						00	1ª Edición	14/07/15
Referencias	Acabados	Material	Sección Conductor	φ Aislante	Para Macho			Rev.	Modificación	Fecha



TERMINAL HEMBRA Serie 4.8  
UP-TPSEK3



DIBUJADO	EP	21/01/16
CONTROL	XM	15/03/16
ESCALA	5/1	

NORMAS MATERIALES	NORMAS DIMENSIONALES	TOLERANCIAS GENERALES
EN 1654 *	Especiales	±0.2 ±2°

FORMATO	A3h
NOMBRE	PT4774 "c"
REF.	4774.xx