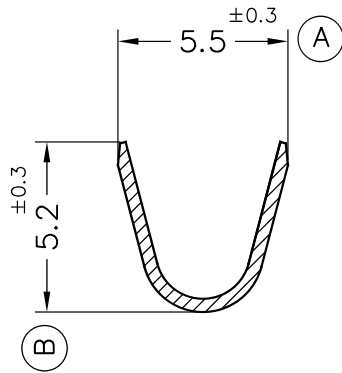
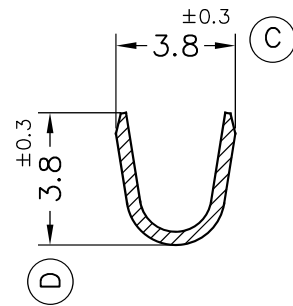


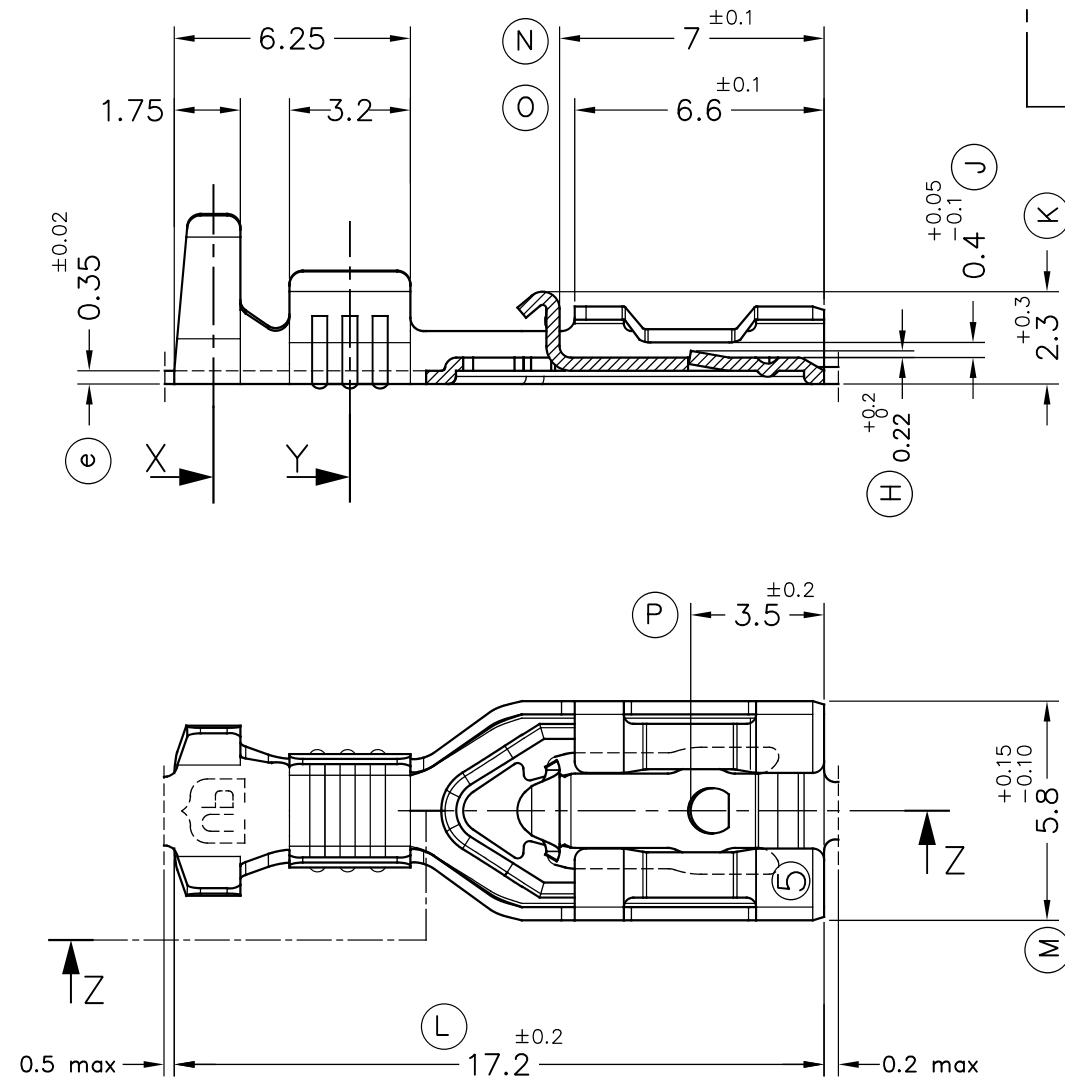
Secc.X



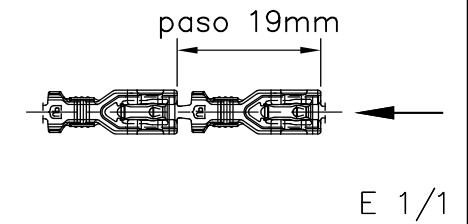
Secc.Y



Secc.Z-Z

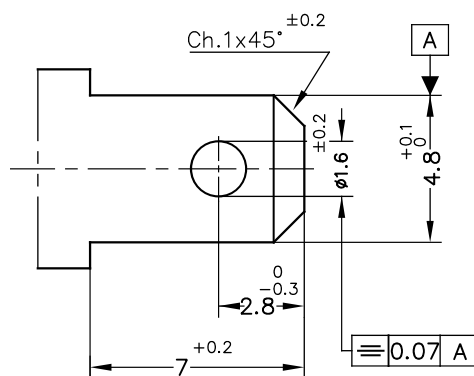
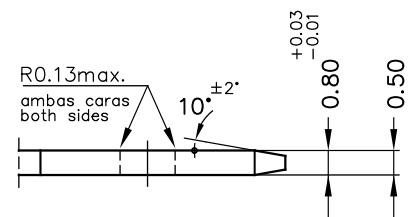


FORMA DE SUMINISTRO

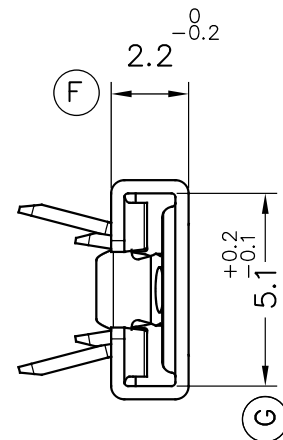


MACHO DE CONEXIÓN SUGERIDO/SUGGESTED MALE

- Material CuZn o Fe-Pre Ni
- Sin rebabas en el agujero/No burrs at hole
- Planitud dentro de 0.03mm en toda su longitud/ Flatness within 0.03mm over the whole length
- Agujero simétrico sobre el eje del macho/ Hole be symmetrical about tab acc. drawing specification



E 5:1



4772.51	Pre-Sn	CuNiSi*	1 ÷ 2.5mm ²	3 ÷ 4.3mm.	4.8x0.5	01 _{vr}	Tol. (H)/Cota (F)	01/06/16
4772.24	Pre-Niq.	Acero						
4772.01	Pre-Sn	Latón*	00	1ª Edición	25/01/16	Rev.	Modificación	Fecha
4772.00	Natural	CuZn30						
Referencias	Acabados	Material	Sección Conductor	φ Aislante	Para Macho	Rev.	Modificación	Fecha



TERMINAL HEMBRA Serie 4.8
UP-TPSEK3



DIBUJADO	EP	25/01/16
CONTROL	XM	15/03/16
ESCALA	5/1	

NORMAS MATERIALES	NORMAS DIMENSIONALES	TOLERANCIAS GENERALES
EN 1654 *	Especiales	±0.2 ±2°

FORMATO	A3h
NOMBRE	PT4772 "c"
REF.	4772.xx