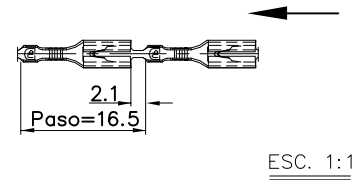
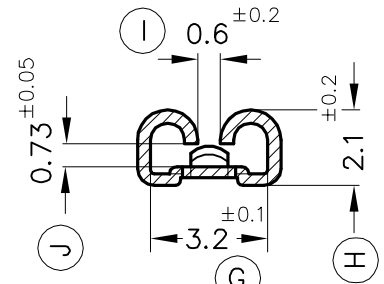


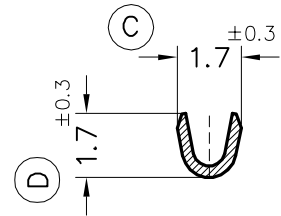
FORMA DE SUMINISTRO



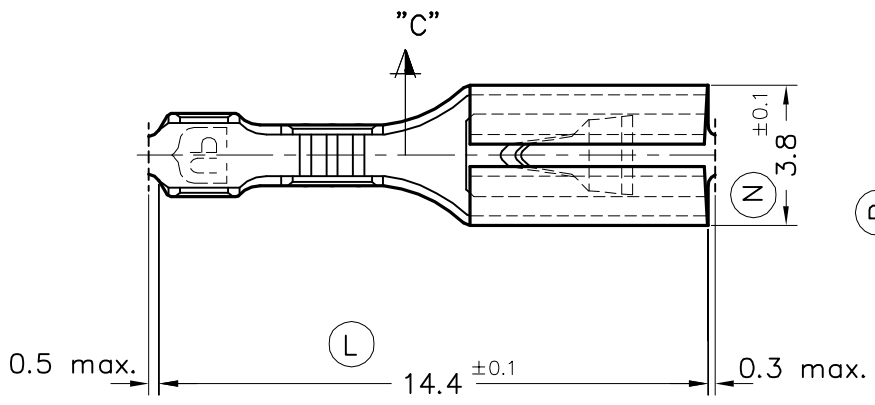
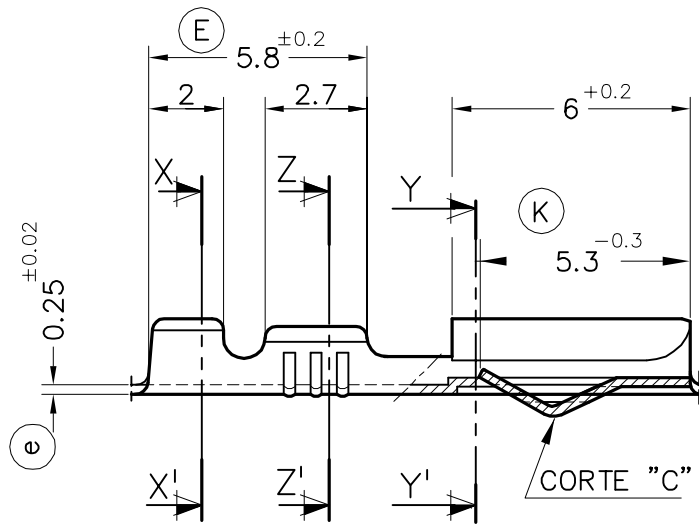
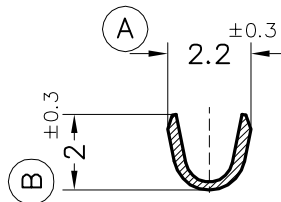
Secc. Y-Y'



Secc. Z-Z'



Secc. X-X'



4511.32	Estañado	Bronce*	0.1÷0.3mm ²	1÷1.8mm.	2.8x0.8							01	Geo. Retención	17/10/11
4511.30	Natural	CuSn6												
4511.02	Estañado	Latón*	0.1÷0.3mm ²	1÷1.8mm.	2.8x0.8							00	1ª Edición	19/04/06
4511.00	Natural	CuZn30												
Referencias	Acabados	Material	Sección Conductor	∅ Aislante	Para Macho	A	B	C	D	Rev.	Modificación	Fecha		

<p>ESPECIALITATS ELÈCTRIQUES ESCUBEDO S.A.</p>			<h2>TERMINAL HEMBRA Serie 2.8</h2>						<p>Terminales Electricos</p>	
DIBUJADO	V.Roura	21/12/05	NORMAS MATERIALES EN1654*	NORMAS DIMENSIONALES Especiales	TOLERANCIAS GENERALES ±0.2 ±2°	FORMATO		A4v		
CONTROL	F.Adamuz	21/12/05				NOMBRE		PT4511 "c"		
ESCALA	5/1		REF.		4511.xx					