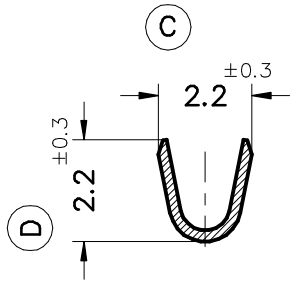
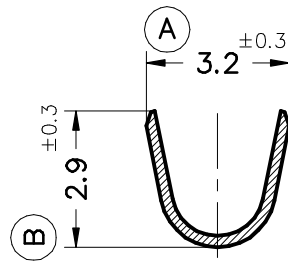


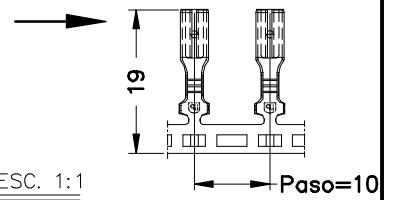
Secc. Z-Z'



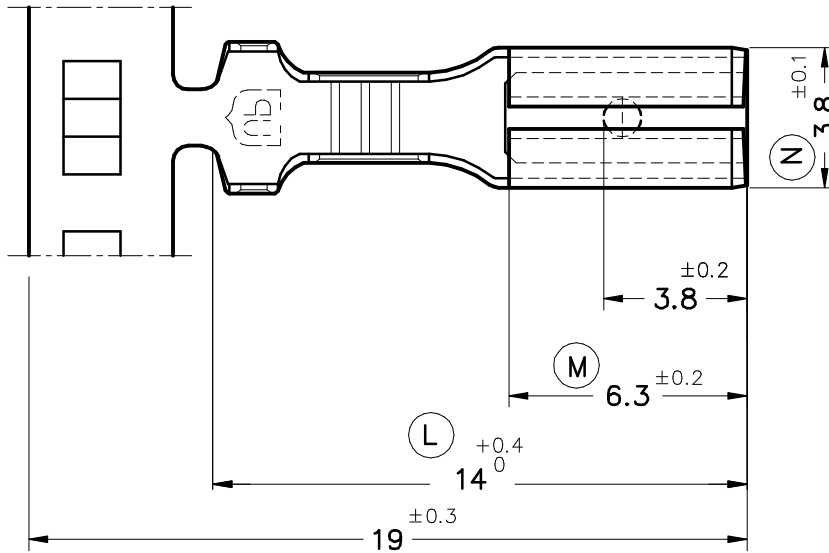
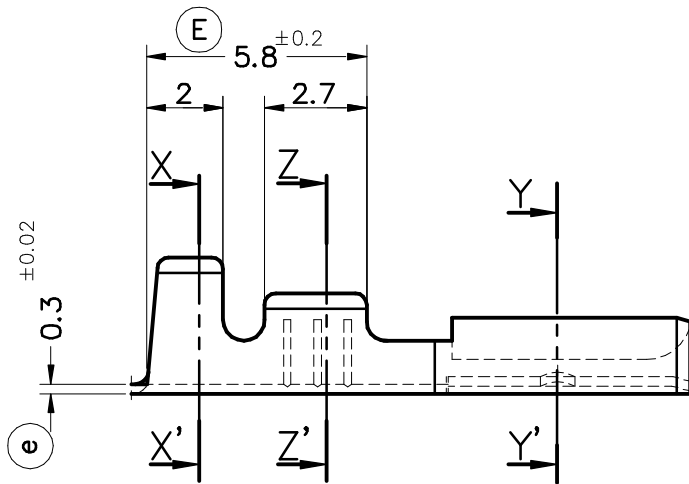
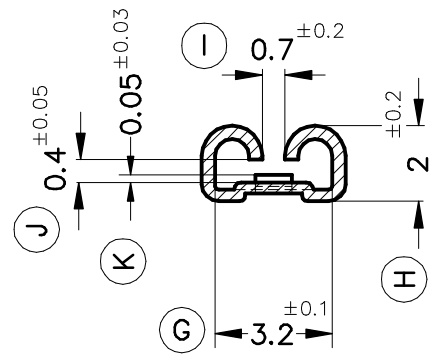
Secc. X-X'



FORMA DE SUMINISTRO



Secc. Y-Y'



4605D31	Pre-estañado	Bronce*	0.3÷0.6mm ²	1.5÷2mm.	2.8x0.5							00	1° Edición	14/07/05
4605D30	Natural	CuSn6												
4605D01	Pre-estañado	Latón*												
4605D00	Natural	CuZn30												
Referencias	Acabados	Material	Sección Conductor	∅ Aislante	Para Macho	A	B	C	D	Rev.	Modificación	Fecha		



TERMINAL HEMBRA Serie 2.8



DIBUJADO	V. Roura	12/05/05
CONTROL	F.Adamuz	12/05/05
ESCALA	5/1	

NORMAS MATERIALES	NORMAS DIMENSIONALES	TOLERANCIAS GENERALES
EN 1654*	Din 46247	±0.2 ±2°

FORMATO	A4v
NOMBRE	PT4605D "c"
REF.	4605Dxx