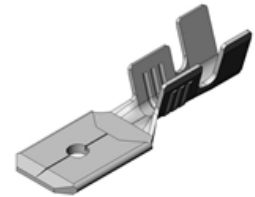




# 6422.xx

## 6.3mm. (.250) UP- STA Male terminals

<b>Description</b>	Short Tab 6.3 x 0.8
<b>Wire section range</b>	1.00 ÷ 2.50 mm <sup>2</sup> (18 ÷ 14 AWG )
<b>Max. Insulator Ø</b>	4.3 mm.
<b>Material thickness</b>	0.40 mm.



**Material**

Part nr.	Material	Finishing	Temperature (°C)
6422.00	Brass	Natural	110
6422.01	Brass	Pre-tin plated	120
6422.02	Brass	Tin plated	120
6422.03	Brass	Silver-plated	130
6422.04	Brass	Nickel-plated	130
6422.30	Bronze	Natural	120
6432.31	Bronze	Pre-tin plated	130

**Notes:** Max. recommended temperature

<b>Application tool</b>	MN6422
<b>Wire striping length</b>	5.4 (±0.5) mm

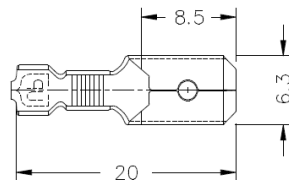
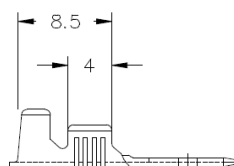
**Crimping parameters & Pull out force**

Wire section (mm <sup>2</sup> ±10%)		Conductor (±0.05)		Insulator (±0.10)	Pull-out force (N)	
Nominal	Actual	Height (mm.)	Width (mm.)		DIN 46249	Actual
1.00	0.91	1.55	2.86	4.08	≥ 160	> 180
1.50	1.36	1.70	2.87	4.10	≥ 200	> 230
2.00	1.98	1.85	2.89	4.10	≥ 200	> 260
2.50	2.45	2.00	2.91	4.11	≥ 250	> 280

**Note:** Values only valid for the application tool specified upwards. The insulator widths are only indicative as they are dependant on the sheath thickness of the wire used.

<b>Packaging</b>	7000 Pieces on 300 mm. Ø x 160 mm. wide cardboard reel, 22 mm terminal chain pitch
------------------	------------------------------------------------------------------------------------

**Drawing**



**Approvals**

- RoHS Compliant



**Document History**

Rev. Nr.	Modification	Date	Created/Revised	Approved
1	Creation/Update	26/11/2013	D.Martinez	A.Calvet

**Disclaimer**

Data obtained from Escubedo Laboratory essays, using own methodology, cablings, equipment and original crimping tools, done in laboratory conditions and following the indicated standards (if indicated), errors and omissions excepted. This document has no contractual meaning and it is publicised only for informative purposes. It can be changed without prior notice. The end customer has the sole responsibility to check these characteristics in its environment and with its own components, manufacturing methods and equipment. See also the full range product overview if available. For further information please visit our web site or contact us.