

5420.**

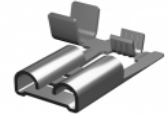
6.3 MM (.250) UP-STA TERMINAL – LONG FLAG



Description Long Flag receptacle for 6.3x 0.8 Tabs.

Wire section range 0.50 – 1.00 mm² (AWG 20 – 18)

Max. Insulator Ø 2.5 mm



**Materials,
Temperature &
Contact resistance**

Part nr.	Material	Finish	Max. Temp. (C°)	UL regulation
5420.00	Brass	Natural	110	
5420.02	Brass	Tin plated	120	
5420.30	Bronze	Natural	120	-
5420.32	Bronze	Tin plated	130	-
5420.33	Bronze	Silver plated	150	-
5420.24	Steel	Nickel-plated	300	

Material thickness 0.40 mm

Max. Rated current

Maximum Current values.

Values of the table show the recommended maximum current values, limited by the cross section of the cable used.

These maximum values also depend on the ambient temperature, and can be reduced depending on the working conditions.

For more precise information about the maximum rating current applicable in each case, consult the "Temperature Rise" and "De-rating" curves.

Wire section (mm ²)	Current (A)
0.50	8
0.75	10
1.00	12



Insertion/Withdrawal forces

	Natural	Tin plated
1 st . Insertion	60 N Max.	80 N Max.
1 st . Withdrawal	60 N Max.	80 N Max.
10 th . Withdrawal	18 N Min.	13 N Min.

Application tool MN5420

Wire striping length 5.0 (±0.5) mm

**Crimping parameters &
Pull out force**

Wire section (mm ² ±10%)	Conductor (mm) 		Insulator (mm) 	Pull-out force (N)
	Height (±0,05)	Width (measured)	Width (measured)	
Nominal				Escubedo
0.50	1.25	2.36	3.42	>90
0.75	1.35	2.37	3.42	>130
1.00	1.45	2.38	3.43	>180

Note: Values only valid for the application tool specified. The insulator width is only indicative as they depend of the insulation properties.

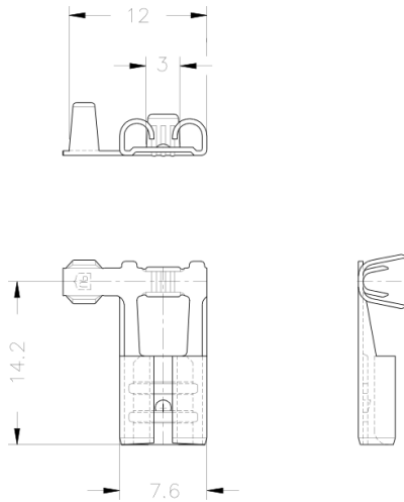
Packaging 5000 Pieces on 300 mm Ø x 160 mm wide cardboard reel, 19 mm terminal chain pitch

5420.**

6.3 MM (.250) UP-STA TERMINAL – LONG FLAG



Drawing



Approvals

- RoHS Compliant
- UL (see table above)



Connectors Compatibility

Reference	Colour	Nº Ways	Material
263301*	Natural	1	PA66V2
263303*	Natural	1	PA66/6V0
263304*	Natural	1	PANF
12.881*	Natural	1	PA66V2
263311*	Natural	1	PA66V2
263313*	Natural	1	PA66/6V0
263314*	Natural	1	PANF

Note: For others materials and colours consult: info@escubedo.com

Disclaimer

Data obtained from Escubedo Laboratory essays, using own methodology, cablings, equipment and original crimping tools, done in laboratory conditions and following the indicated standards, errors and omissions excepted. This document has no contractual meaning and it is publicised only for informative purposes. It can be changed without prior notice. The end customer has the sole responsibility to check these characteristics in its environment and with its own components, manufacturing methods and equipment. See also the full range product overview if available. For further information please visit our web site or contact us.

Rev. Nr.	Concept	Date	Created/Revised	Approved
5	Sheet format Update	23/09/2016	D.Martinez / E.Roura	X.Menac