



5100.xx



Splice UP-SP Terminals

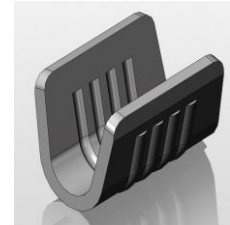
Description Special terminals - End crimping

Wire section range 0.3 – 1.5 mm² (AWG 22 - 16)

Materials & Temperature

Part nr.	Material	Finishing	Max. temp. (C°)	UL regulation
5100.00	Brass	Natural	110	c US
5100.02	Brass	Tin plated	120	-
5100.24	Steel	Nickel-plated	300	-

Notes: Max. recommended temperature



Material thickness 0.5 mm

Application tool MN5100

Wire striping length 6.8 (±0.5) mm

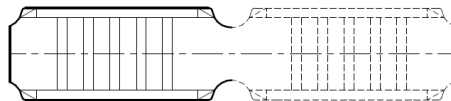
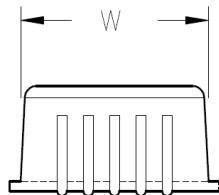
Crimping parameters & Pull out force

Wire section (mm ² ±10%)		Conductor (±0,03)		Pull-out force (N)	
Nominal	Actual	Height (mm.)	Width (mm.)	DIN46249	ESCUBEDO
0.35	0.31	1.60	2.58	-	> 50
0.50	0.45	1.70	2.59	≥ 80	> 90
0.75	0.68	1.75	2.59	≥ 120	> 130
1.00	0.91	1.80	2.60	≥ 160	> 170
1.50	1.36	2.00	2.62	≥ 200	> 210

Note: Values only valid for the application tool specified upwards.

Packaging 30000 Pieces on 300 mm. Ø x 160 mm. wide cardboard reel, 7 mm terminal chain pitch

Drawing



Approvals

- RoHS Compliant
- UL (see table above)



Disclaimer

Data obtained from Escubedo Laboratory essays, using own methodology, cablings and equipment, done in laboratory conditions and following the indicated standards, errors and omissions excepted. This document has no contractual meaning and it is publicised only for informative purposes. It can be changed without prior notice. The end customer has the sole responsibility to check these characteristics in its environment and with its own components, manufacturing methods and equipment. See also the full range product overview if available. For further information please visit our web site or contact us.

Rev. Nr.	Modification	Date	Created/Revised	Approved
1	Creation/update	29/04/2013	D.Martínez	A.calvet