

4734.**



6.3 MM (.250) UP-SEK TERMINALS - MANUAL DISCONNECTION

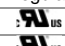
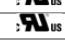
Description Standard self-locking terminals for manual disconnection

Wire section range 2.50 ÷ 5.00 mm² (AWG 14 - 10)

Max. Insulator Ø 5.00 mm.



Materials, Temperature

Part nr.	Material	Finishing	Max. temp. (C°)	Resist. (mΩ)	UL regulation
4734.00	Brass	Natural	110	(T.B.D.)	
4734.02	Brass	Tin plated	120	(T.B.D.)	
4734.30	Bronze	Natural	120	(T.B.D.)	--
4734.32	Bronze	Tin plated	130	(T.B.D.)	--
4734.70	German silver	Natural	210	(T.B.D.)	--

Note: Max. recommended temperature

Material thickness 0.4 mm

Max. Rated current

Maximum Current values.

Values of the table show the recommended maximum current values, limited by the cross section of the cable used. These maximum values also depend on the ambient temperature, and can be reduced depending on the working conditions. For more precise information about the maximum rating current applicable in each case, consult the "Temperature Rise" and "De-rating" curves.

Wire section (mm ²)	Current (A)
1.50	16
2.50	20

Note: Maximal Terminal current 20A

Security function

Self-locking function prevents disconnection by pulling the cable. Disconnection is possible disabling the locking function, pressing the lever manually (see withdrawal forces).

Insertion/Withdrawal forces

	Brass/bronze	German Silver
1 st Insertion	35 N Max	35 N Max
1 st Withdrawal locking disabled	30 N Max	30 N Max
10 th Withdrawal locking enabled	90 N Min	70 N Min



Application tool

MN4724

Wire striping length

5.5 (±0.5) mm

Crimping parameters &

In the following table there are the wire configurations allowed

Pull out force

Wire section (mm ²)	Conductor (±0,05)		Insulator (±0,15)	Pull-out force (N)	
	Height (mm.)	Width (mm.)		DIN64249	ESCUBEDO
Nominal			Width (mm.)		
2.50	1.95	3.57	4.6	≥ 250	> 260
1.50 + 1.50	2.10	3.58	4.6	≥ 200	> 210
2.50 + 1.00	2.20	3.58	4.6	≥ 160	> 170
1.50 + 2.50	2.30	3.59	4.6	≥ 200	> 210
2.50 + 2.50	2.40	3.61	4.6	≥ 250	> 260

Note: Values only valid for the application tool specified upwards.

The insulator widths are only indicative as they are dependent on the sheath thickness of the wire used. Pull out force has been applied on the smaller wire

Packaging

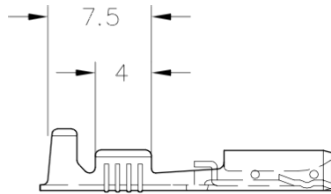
6000 Pieces on 300 mm. Ø x 160 mm. wide cardboard reel, 22.5 mm terminal chain pitch

4734.**



6.3 MM (.250) UP-SEK TERMINALS- MANUAL DISCONNECTION

Drawing



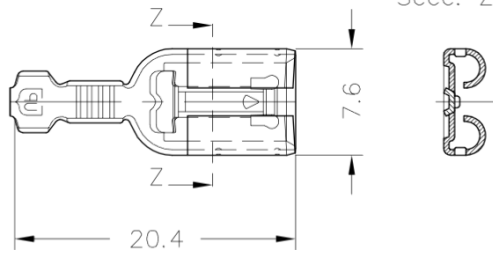
Approvals

- RoHS Compliant
- UL



Products with (see table above), fulfill UL Regulation

Secc. Z-Z



Note: (T.B.D.) To be determined

Disclaimer

Data obtained from Escubedo Laboratory essays, using own methodology, cablings, equipment and original crimping tools, done in laboratory conditions and following the indicated standards, errors and omissions excepted. This document has no contractual meaning and it is publicised only for informative purposes. It can be changed without prior notice. The end customer has the sole responsibility to check these characteristics in its environment and with its own components, manufacturing methods and equipment. See also the full range product overview if available. For further information please visit our web site or contact us.

Rev. Nr.	Concept	Date	Created/Revised	Approved
1	Creation/Update	30/01/2015	D.Martinez / E.Roura	JC Sanchez
2	Update crimp & format	21/05/2015	D.Martinez / E.Roura	JC Sanchez