



8546.**
UP-FIT SERIES · 4.20 MM UP-FIT CONNECTIONS



Specification 4.20 mm UP-FIT Female Terminals

Wire size mm² (AWG) 0,2-0,8 (18-24)

Ø Insulation (mm) 1-2,75

Counterpart 7545.**; 7546.**; 7547.**

Materials, temperature and contact resistance

Part nr.	Material	Finishing	Max. Temp. (°C)
8546.01	Brass	Pre-tin-plated	120
8546.31	Bronze	Pre-tin-plated	130

Material thickness (mm) 0,2



Insertion / Withdrawal forces

	8546.01 / 31
1st Insertion (max)	5N ¹
1st Withdrawal (min)	1N ¹

¹ Valid for UP-FIT Series

Application tool MN7546

Crimping parameters & pull out force

Wire section (±10%)	Conductor 		Insulator 	Pull-out force (N)
	Height (mm)	Width (mm)	Width (mm)	
18 AWG	0.95	1.65	(T.B.D.)	89N @ 60s
20 AWG	0.90	1.64	(T.B.D.)	58N @ 60s
22 AWG	0.85	1.64	(T.B.D.)	36N @ 60s
24 AWG	0.80	1.62	(T.B.D.)	22,3N @ 60s

Values only valid for the application tool specified upwards. The insulator widths are only indicative as they are dependent on the sheath thickness of the wire used.

Winding number 5000

Compatible connectors 242M12**, 242M22**, 242M23**, 242M24**, 242M25**, 242M26**, 242M28**

Approved regulations

Part nr.	Approval	Standard	File	Certified framework
8546.01 ¹	UL	UL 1977	E223221	AWG 24-18 / MN8546 - MN7546
8546.31 ¹	UL	UL 1977	E223221	AWG 24-18 / MN8546 - MN7546

¹ Cat. No. meets with the standard UL1977 as a component of UP-FIT full connection system.

- Rated current and voltage:
 2 poles - AWG 24 - 3A/600V (USR, CND)
 2 poles - AWG 22 - 4A/600V (USR, CND)
 2 poles - AWG 20 - 5A/600V (USR, CND)
 2 poles - AWG 18 - 6A/600V (USR, CND)
 4 poles - AWG 24 - 3A/600V (USR, CND)
 4 poles - AWG 22 - 4A/600V (USR, CND)
 4 poles - AWG 20 - 4A/600V (USR, CND)
 4 poles - AWG 18 - 6A/600V (USR, CND)
 6 poles - AWG 24 - 3A/600V (USR, CND)
 6 poles - AWG 22 - 3A/600V (USR, CND)
 6 poles - AWG 20 - 4A/600V (USR, CND)
 6 poles - AWG 18 - 5A/600V (USR, CND)
 8,10 and 12 poles - AWG 24 - 2A/600V (USR, CND)
 8,10 and 12 poles - AWG 22 - 3A/600V (USR, CND)
 8,10 and 12 poles - AWG 20 - 4A/600V (USR, CND)
 8,10 and 12 poles - AWG 18 - 5A/600V (USR, CND)
 16 poles - AWG 24 - 2A/600V (USR, CND)
 16 poles - AWG 22 - 3A/600V (USR, CND)
 16 poles - AWG 20 - 3A/600V (USR, CND)
 16 poles - AWG 18 - 4A/600V (USR, CND)



8546.**

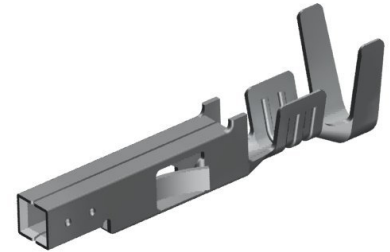
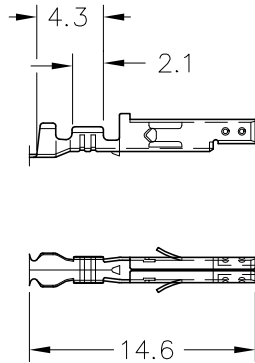
UP-FIT SERIES · 4.20 MM UP-FIT CONNECTIONS



Approvals



Drawing



(T.B.D.): To be determined

Disclaimer

Data obtained from Escubedo Laboratory essays, using own methodology, cabling, equipment and original crimping tools, done in laboratory conditions and following the indicated standards, errors and omissions excepted. This document has no contractual meaning and it is publicised only for informative purposes. It can be changed without prior notice. The end customer has the sole responsibility to check these characteristics in its environment and with its own components, manufacturing methods and equipment. See also the full range product overview if available. For further information please visit our web site or contact us

Rev. Nr.	Concept	Date	Created/Revised	Approved
A1	Datasheet generated automatically [A1]	2018-08-03	Laboratory Dept.	E. Roura

Especialitats Elèctriques Escubedo S.A.U. · Ctra. de Girona-Olot Km. 35,5 · 17843 Riudellots de la Creu · Girona · Spain
Tel.: 34 972 171 706 · Fax: +34 972 171 714 · info@escubedo.com · www.escubedo.com