



5110.**
SPECIAL TERMINALS · SPLICES



Specification Multisplices

W (mm) 1,5x1

Wire size mm² (AWG) 0,5-1,5 (20-16)

Materials, temperature and contact resistance

Part nr.	Material	Finishing	Max. Temp. (°C)
5110.00	Brass	Natural	110
5110.01	Brass	Pre-tin-plated	120
5110.24	Steel	Nickel-plated	300
5110.30	Bronze	Natural	120
5110.31	Bronze	Pre-tin-plated	130

Material thickness (mm) 0,3

Application tool MN5110

Wire strip length 2.5 (±0.3) mm

Crimping parameters & pull out force

Wire section (±10%)	Conductor		Insulator	Pull-out force (N)
	Height (mm)	Width (mm)	Width (mm)	
0.50 mm ²	1.40 (±0.03)	1.71 (±0.03)	(T.B.D.)	56N @ 60s
0.75 mm ²	1.50 (±0.05)	1.72 (±0.05)	(T.B.D.)	84N @ 60s
1.00 mm ²	1.60 (±0.05)	1.73 (±0.05)	(T.B.D.)	108N @ 60s
1.50 mm ²	1.80 (±0.05)	1.75 (±0.05)	(T.B.D.)	150N @ 60s

Values only valid for the application tool specified upwards. The insulator widths are only indicative as they are dependent on the sheath thickness of the wire used.

Winding number 90000

Approved regulations

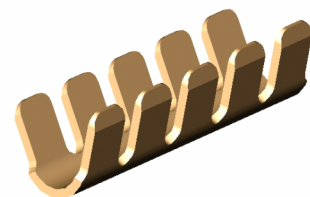
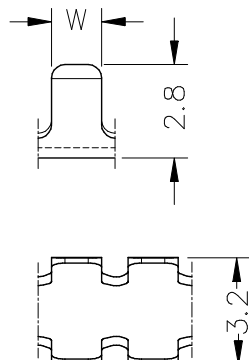
Part nr.	Approval	Standard	File	Certified framework
5110.00 ¹	UL	UL 486C	E232316	AWG 20-16 (10-26 Stranded Cu) / MN5110

¹ 0,5, STR

Approvals



Drawing





5110.**
SPECIAL TERMINALS · SPLICES



(T.B.D.): To be determined

Disclaimer

Data obtained from Escubedo Laboratory essays, using own methodology, cablings, equipment and original crimping tools, done in laboratory conditions and following the indicated standards, errors and omissions excepted. This document has no contractual meaning and it is publicised only for informative purposes. It can be changed without prior notice. The end customer has the sole responsibility to check these characteristics in its environment and with its own components, manufacturing methods and equipment. See also the full range product overview if available. For further information please visit our web site or contact us

Rev. Nr.	Concept	Date	Created/Revised	Approved
A2	Update UL approval and wire strip length	2020-02-14	E. Roura (Laboratory Dept.)	M. Codina (Engineering Dept.)
A1	Datasheet generated automatically [A1]	2018-10-01	Laboratory Dept.	E. Roura