



**4730F\*\***  
**6.3 (.250) TYPE SERIES · RECEPTACLES**



**Specification** Standard self-locking terminals for manual disconnection

**For male (mm)** 6,3x0,8

**Wire size mm<sup>2</sup> (AWG)** 0,2-0,6 (24-20)

**Ø Insulation (mm)** 1,8-2,5

**Materials, temperature and contact resistance**

Part nr.	Material	Finishing	Max. Temp. (°C)
4730F00	Brass	Natural	110
4730F02	Brass	Tin plated	120
4730F30	Bronze	Natural	120
4730F32	Bronze	Tin plated	130

**Material thickness (mm)** 0,4

**Max. rated current**

Wire section	4730F00 / 02 / 30 / 32
0.25 mm <sup>2</sup>	(T.B.D.)
0.30 mm <sup>2</sup>	(T.B.D.)
0.35 mm <sup>2</sup>	(T.B.D.)
0.50 mm <sup>2</sup>	8

**Insertion / Withdrawal forces**

	4730F00 / 02 / 30 / 32
1st Insertion (max)	35N <sup>1</sup>
1st Withdrawal (max)	30N <sup>1</sup>
1st Withdrawal (min, locking enabled)	90N <sup>1</sup>

<sup>1</sup> Valid for Natural Brass Tab

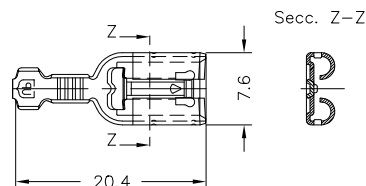
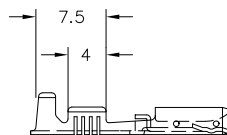
**Wire strip length** 5.5 (±0.5) mm

**Winding number** 8000

**Approvals**



**Drawing**

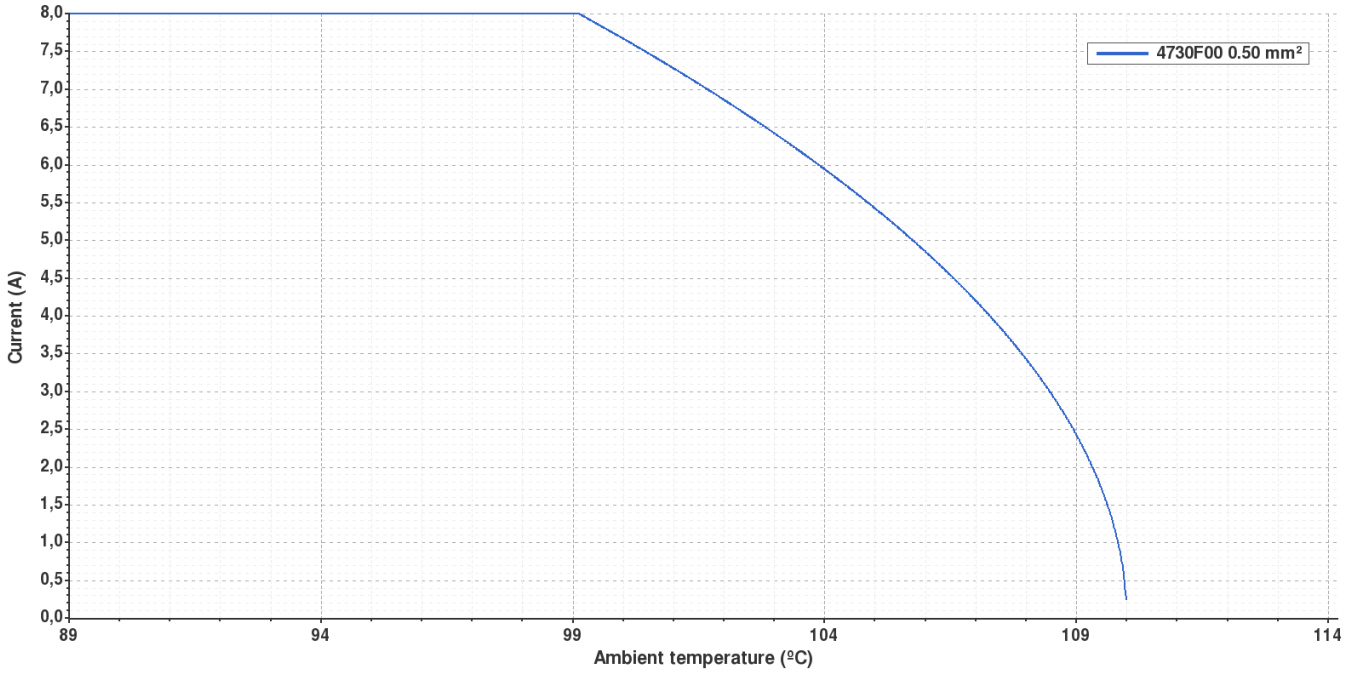




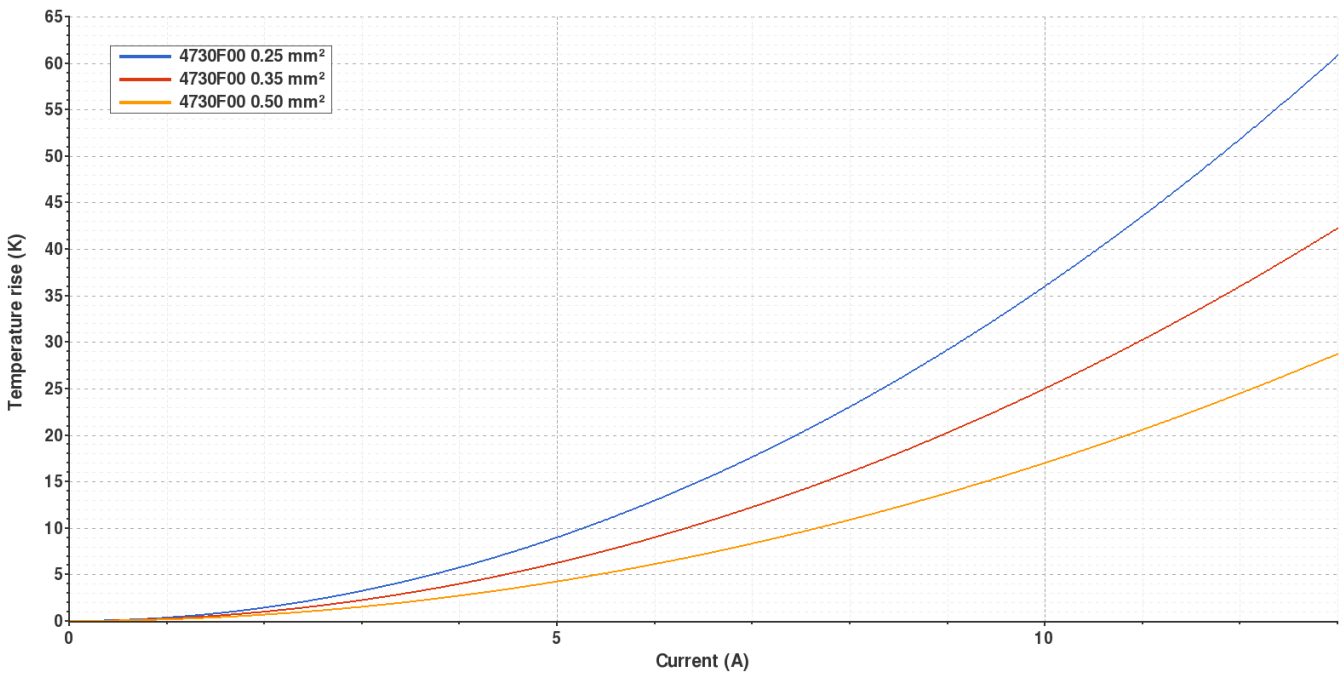
**4730F00 NATURAL BRASS**  
**6.3 (.250) TYPE SERIES · RECEPTACLES**



**Derating curve** Current carrying capacity vs. Ambient temperature



**Temperature rise curve** Terminal temperature rise due to the current carried



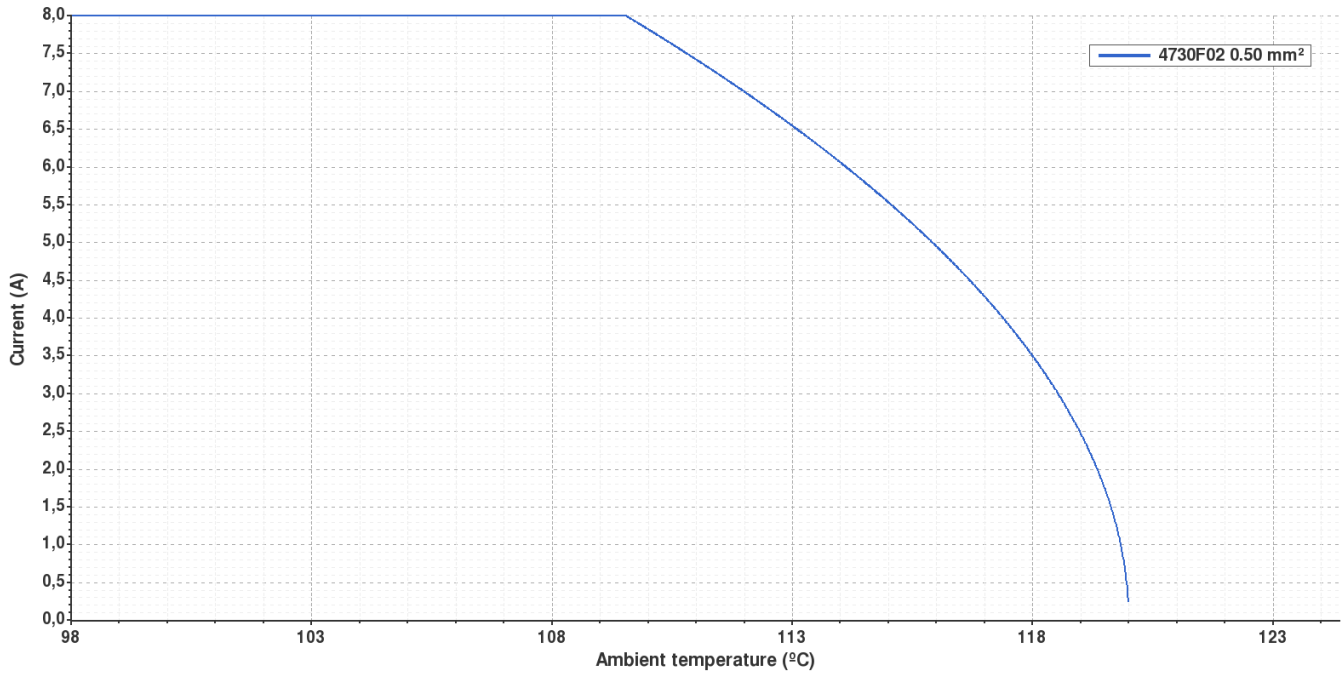
Valid for Natural Brass Tab



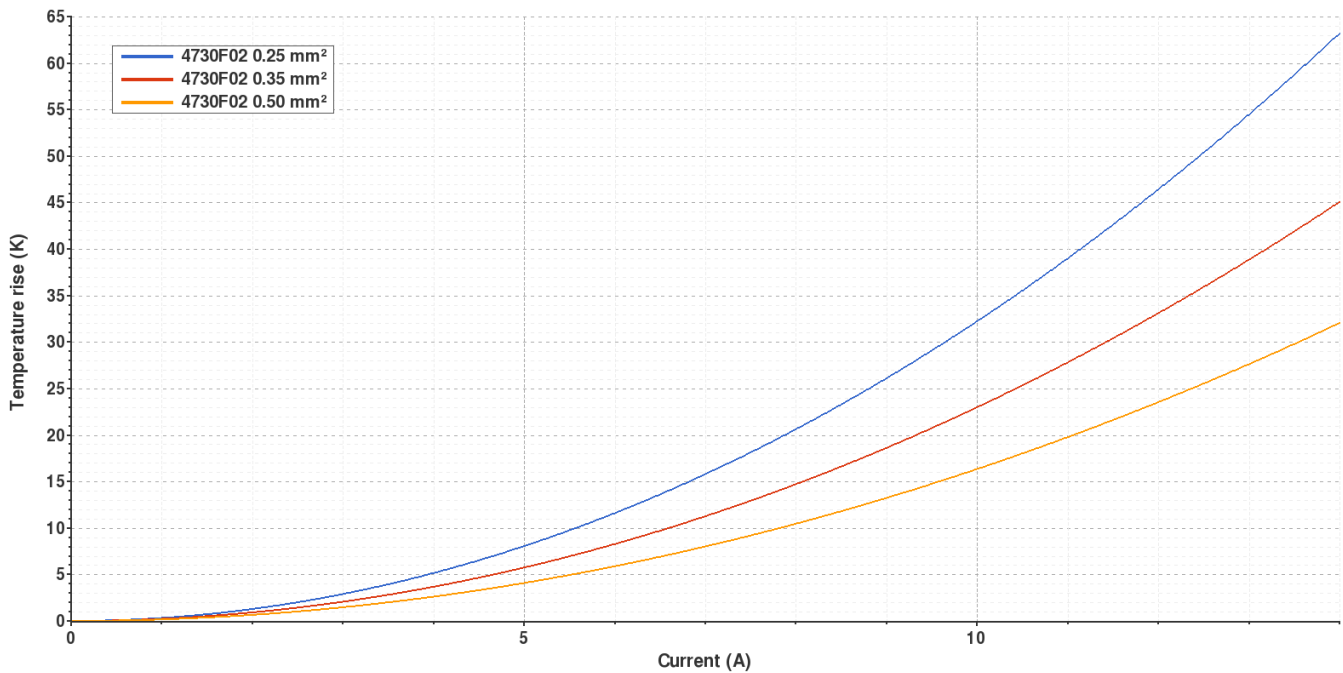
**4730F02 TIN PLATED BRASS**  
**6.3 (.250) TYPE SERIES · RECEPTACLES**



**Derating curve** Current carrying capacity vs. Ambient temperature



**Temperature rise curve** Terminal temperature rise due to the current carried



Valid for Natural Brass Tab



**4730F\*\***  
**6.3 (.250) TYPE SERIES · RECEPTACLES**



(T.B.D.): To be determined

**Disclaimer**

Data obtained from Escubedo Laboratory essays, using own methodology, cablings, equipment and original crimping tools, done in laboratory conditions and following the indicated standards, errors and omissions excepted. This document has no contractual meaning and it is publicised only for informative purposes. It can be changed without prior notice. The end customer has the sole responsibility to check these characteristics in its environment and with its own components, manufacturing methods and equipment. See also the full range product overview if available. For further information please visit our web site or contact us

Rev. Nr.	Concept	Date	Created/Revised	Approved
A1	Datasheet generated automatically [A1]	2020-11-16	E.Roura (Laboratory dept.)	M.Codina (Engineering dept.)
<small>Especialitats Elèctriques Escubedo S.A.U. · Ctra. de Girona-Olot Km. 35,5 · 17843 Riudellots de la Creu · Girona · Spain            Tel.: 34 972 171 706 · Fax: +34 972 171 714 · <a href="mailto:info@escubedo.com">info@escubedo.com</a> · <a href="http://www.escubedo.com">www.escubedo.com</a></small>				