

5422.**



6.3 MM (.250) UP-STA TERMINAL – LONG FLAG

Description Long Flag receptacle for 6.3x 0.8 Tabs.

Wire section range 1.00 – 2.50 mm² (AWG 18 – 14)

Max. Insulator Ø 4.3 mm

Materials
 Temperature &
 Contact resistance &
 UL Approvals / File

Part nr.	Material	Finish	Max. Temp. (C°)	Contact Resistance (mΩ)	File UL regulation
5422.00	Brass	Natural	110		E211727
5422.02	Brass	Tin plated	120	0.65	E211727
5422.32	Bronze	Tin plated	130		-
5422.33	Bronze	Silver plated	150		-
5422.24	Steel	Nickel plated	300		E211727

Note: Maximal contact resistance: only contact zone, valid for natural brass tabs (EN61210 / UL310).

Material thickness 0.4 mm

Max. Rated current

Maximum Current values.

Values of the table show the recommended maximum current values, limited by the cross section of the cable used. These maximum values also depend on the ambient temperature, and can be reduced depending on the working conditions. For more precise information about the maximum rating current applicable in each case, consult the "Temperature Rise" and "De-rating" curves.

Wire section (mm ²)	Current (A)
1.00	12
1.50	16
2.50	20

Insertion/Withdrawal forces



	Natural	Plated
1 st . Insertion	60 N Max.	80 N Max.
1 st . Withdrawal	60 N Max.	80 N Max.
10 th . Withdrawal	18 N Min.	13 N Min.

Note: Insertion and withdrawal forces valid for natural brass tabs (EN61210 / UL310).

Application tool MN5422

Wire striping length 5.0 (±0.5) mm

Crimping parameters & Pull out force

Wire section (mm ² ±10%)	Conductor (mm) 		Insulator (mm) 	Pull-out force (N)
	Height (±0.05)	Width (measured)	Width (measured)	
1.00	1.55	2.86	4.05	>150
1.50	1.67	2.88	4.05	>190
2.00	1.80	2.90	4.05	>250
2.50	1.95	2.90	4.10	>290

Note: Values only valid for the application tool specified. The insulator width is only indicative as they depend on the insulation properties

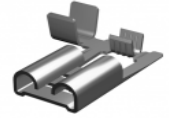
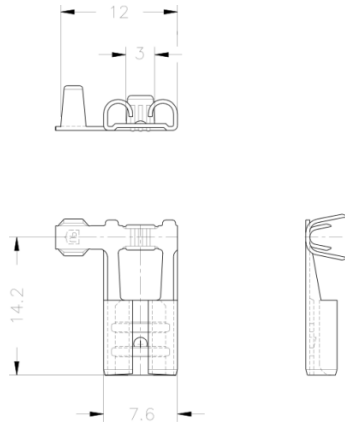
Packaging 4000 Pieces on 300 mm Ø x 160 mm wide cardboard reel, 19 mm terminal chain pitch

5422.**





6.3 MM (.250) UP-STA TERMINAL – LONG FLAG

Drawing



Approvals

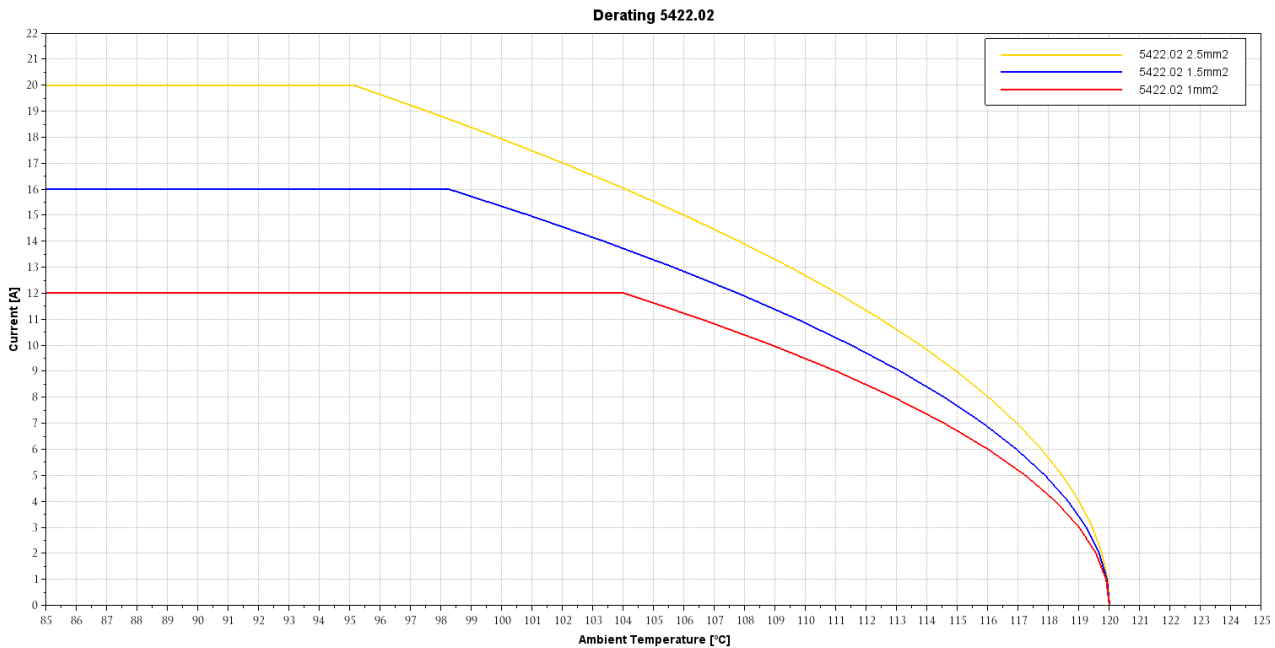
RoHS Copliant	
UL (See materials table)	

Connectors Compatibility 26330**; 12.88**

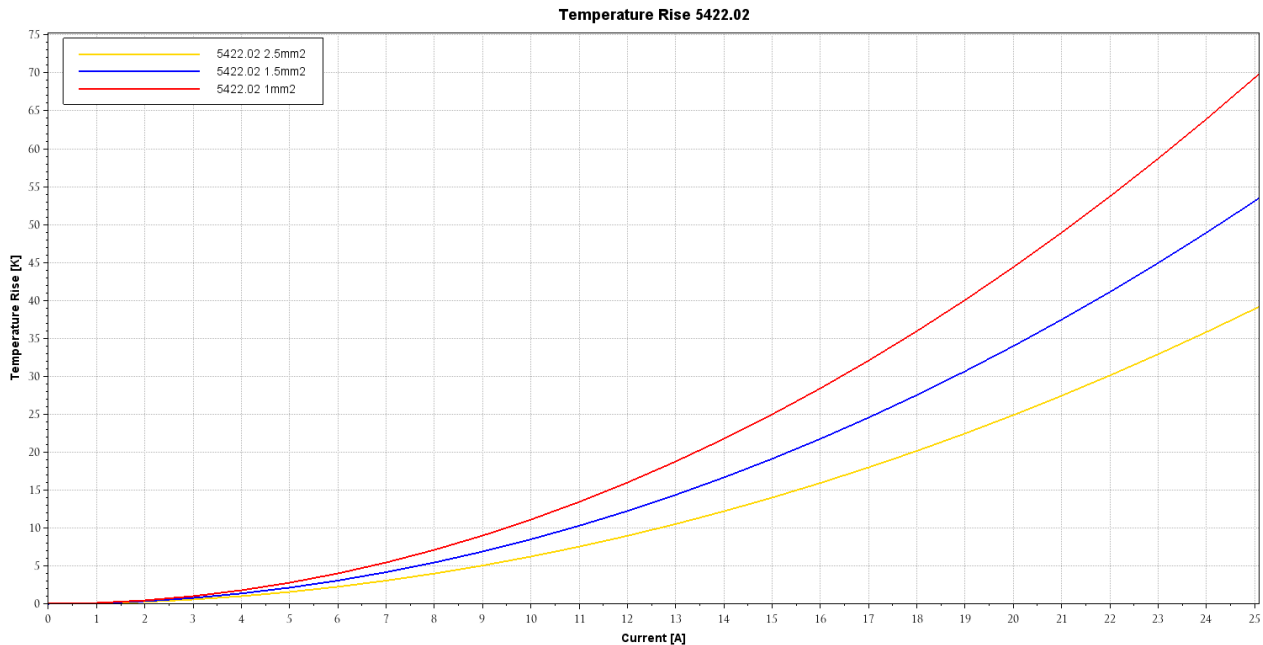
5422.02 TIN PLATED BRASS
6.3 MM (.250) UP-STA TERMINAL – LONG FLAG



De-rating Curve Current carrying capacity vs. Ambient Temperature



Temperature Rise Curve Terminal Temperature rise due to the current carried



Note: Curves show terminal behavior in a first connection, working in open air (without connector). Security margin has been applied. Curves valid for natural brass tabs (EN61210 / UL310)

Disclaimer

Data obtained from Escubedo Laboratory essays, using own methodology, cabling, equipment and original crimping tools, done in laboratory conditions and following the indicated standards, errors and omissions excepted. This document has no contractual meaning and it is publicised only for informative purposes. It can be changed without prior notice. The end customer has the sole responsibility to check these characteristics in its environment and with its own components, manufacturing methods and equipment. See also the full range product overview if available. For further information please visit our web site or contact us.

Rev. Nr.	Modification	Date	Created/Revised	Approved
7	Update 5422.02 - De-rating, temp. rise and contact resistance	26/10/2018	D.Martinez / E.Roura	X.Menac
6	Update materials	19/10/2018	D.Martinez / E.Roura	X.Menac
5	Sheet format Update	23/09/2016	D.Martinez / E.Roura	X.Menac