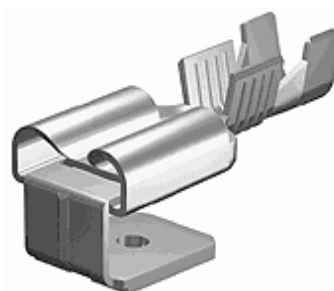


Product Overview / Características Principales

5222T00

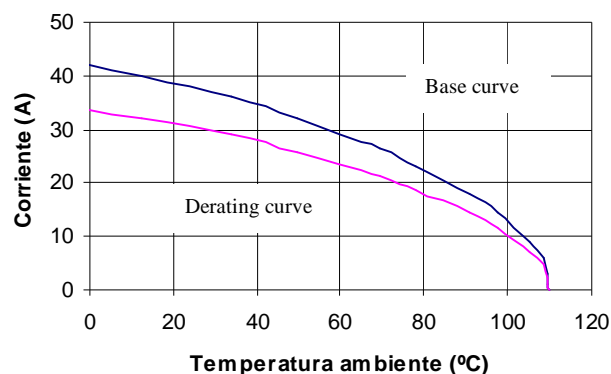
Description / Descripción: Receptacle – tab 6.3 x 0.8 Mixto hembra macho 6.3 x 0.8
For / Para: Tab 6.3 x 0.8 / macho 6.3 x 0.8
Wire size range / Rango de sección de cable: 0.75 – 1.5 mm ²
Max insulator diameter / Diámetro máximo aislante: 3.3 mm
Wire stripping / Longitud de pelada: 5.5 ± 0.5 mm
Application Tool / Util de engaste: MN5222T
Material / Material: Natural Brass / Latón Natural



Test values / Resultados de ensayos

Insertion and withdrawal force / Esfuerzo introducción-extracción				
	1° insertion/ 1° introducción	1° withdrawal/ 1° extracción	6° withdrawal/ 6° extracción	10° withdrawal/ 10° extracción
CEI760	-	-	-	-
ESCUBEDO	60 N max	60 N max	-	18 N min

Current carrying capacity with maximal suitable wire size (IEC 760) Capacidad de paso de corriente con la sección de cable mayor (CEI 760)	16 A	
Maximal temperature (DIN 61210) Temperatura máxima (DIN 61210)	110°C	Typical value Valor típico
Maximal contact resistance with minimal suitable wire size (IEC 760) Máxima resistencia de contacto con la sección de cable menor (CEI 760)	1.45mΩ	0.93mΩ



Crimp data / Datos de engastadura				Pull-out force / Fuerza de tracción	
Wire size / Sección	Conductor		Insulator Anchura	DIN 46249	typical
	Altura	Anchura			
0.75 mm ²	1.40	2.63	4.2	≥ 120 N	≥ 140 N
1.0 mm ²	1.50	2.65	4.21	≥ 160 N	≥ 170 N
1.5 mm ²	1.70	2.68	4.21	≥ 200 N	≥ 210 N

Values only valid for the application tool specified upwards / Valores válidos únicamente para el útil de engaste especificado arriba

Further information on request / Para más información consultar info@escubedo.com				
2	Standard max. Temp. change	10/03/2011	David Martinez	Joan Carles Sanchez
1	Creation & Derating	28/05/2009	David Martinez	Angela Arevalo
Nr/N°	Modification/Modificación	Date/Fecha	Name/ Nombre	Approved / Aprobado

Disclaimer:

Data obtained from Escubedo Laboratory essays, using own methodology, cablings and equipment, done in laboratory conditions and following the indicated standards, errors and omissions excepted. This document has no contractual meaning and it is published only for informative purposes. It can be changed without prior notice. The end customer has the sole responsibility to check these characteristics in its environment and with its own components, manufacturing methods and equipment. See also the full range product overview if available. For further information please visit our web site or contact us.